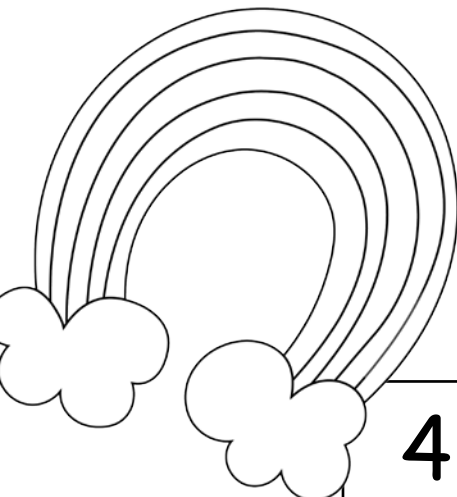


# Rainbow Addition Cross Out

Directions: Roll two dice.  
Find the sum of the numbers. Cross out a box with the sum. When there are no numbers left with the sum you roll, you lose your turn. The player who crosses out the last number is the winner.



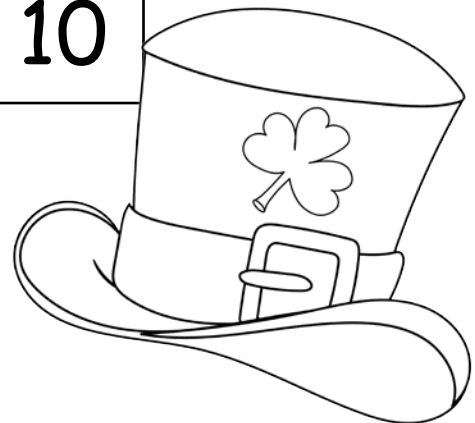
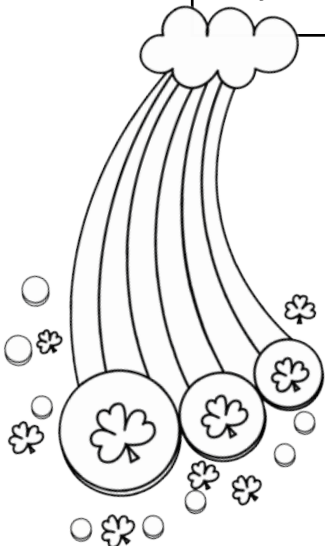
			2	2			
			3	3			
		4	4	4	4		
	5	5	5	5	5	5	
6	6	6	6	6	6	6	6
7	7	7	7	7	7	7	7
8	8	8	8	8	8	8	8
	9	9	9	9	9	9	
		10	10	10	10		
			11	11			
			12	12			

# Leprechaun Addition Cross Out



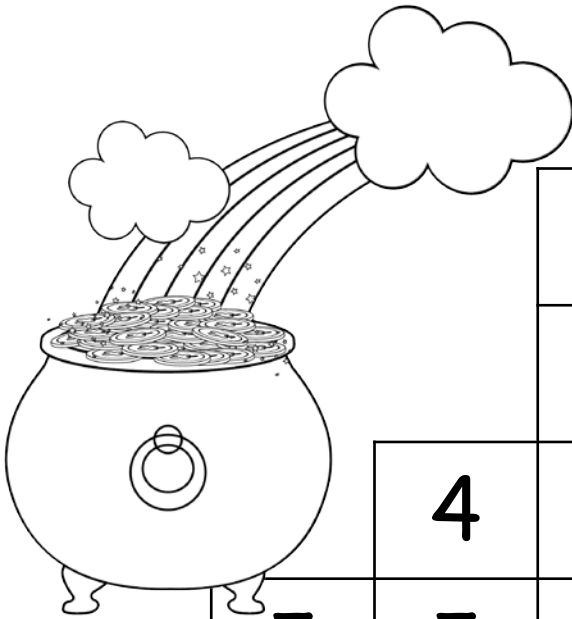
Directions: Roll two dice.  
Find the sum of the numbers. Cross out a box with the sum. When there are no numbers left with the sum you roll, you lose your turn. The player who crosses out the last number is the winner.

			2	2			
			3	3			
	4	4	4	4	4		
5	5	5	5	5	5	5	
6	6	6	6	6	6	6	6
7	7	7	7	7	7	7	7
8	8	8	8	8	8	8	8
9	9	9	9	9	9	9	
	10	10	10	10			
		11	11				
		12	12				

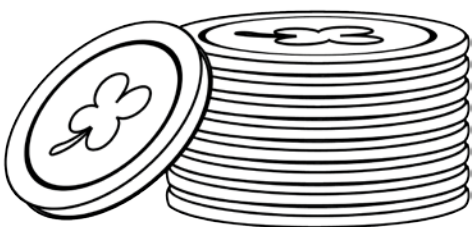


# Pot of Gold Addition Cross Out

Directions: Roll two dice.  
Find the sum of the numbers. Cross out a box with the sum. When there are no numbers left with the sum you roll, you lose your turn. The player who crosses out the last number is the winner.

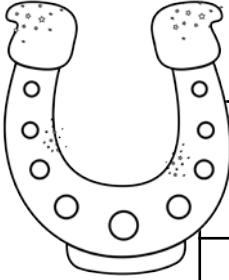
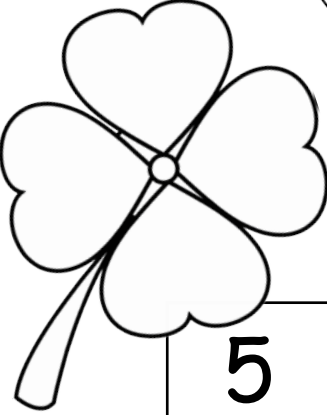
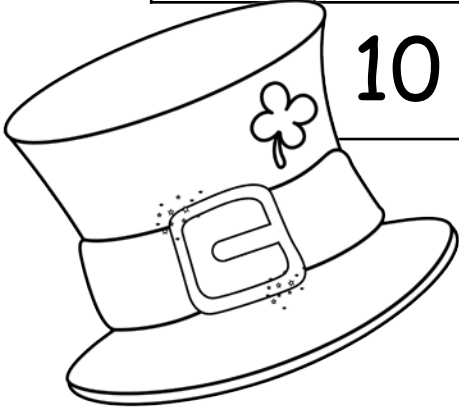
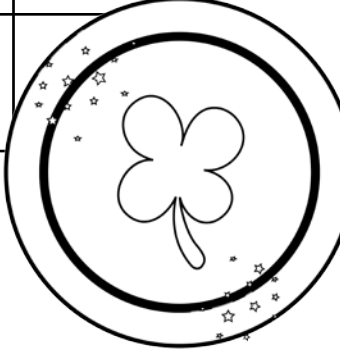


		2	2				
		3	3				
		4	4	4	4		
	5	5	5	5	5	5	
6	6	6	6	6	6	6	6
7	7	7	7	7	7	7	7
8	8	8	8	8	8	8	8
	9	9	9	9	9	9	
		10	10	10	10		
		11	11				
		12	12				



# Lucky Charms Addition Cross Out

Directions: Roll two dice.  
Find the sum of the numbers. Cross out a box with the sum. When there are no numbers left with the sum you roll, you lose your turn. The player who crosses out the last number is the winner.

			2	2			
			3	3			
		4	4	4	4		
	5	5	5	5	5	5	
6	6	6	6	6	6	6	6
7	7	7	7	7	7	7	7
8	8	8	8	8	8	8	8
	9	9	9	9	9	9	
	10	10	10	10			
		11	11				
		12	12				
							

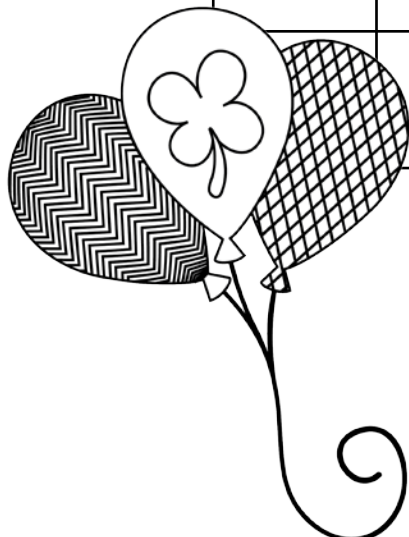


# St. Patrick's Day Addition Cross Out

Directions: Roll two dice.  
Find the sum of the numbers. Cross out a box with the sum. When there are no numbers left with the sum you roll, you lose your turn. The player who crosses out the last number is the winner.

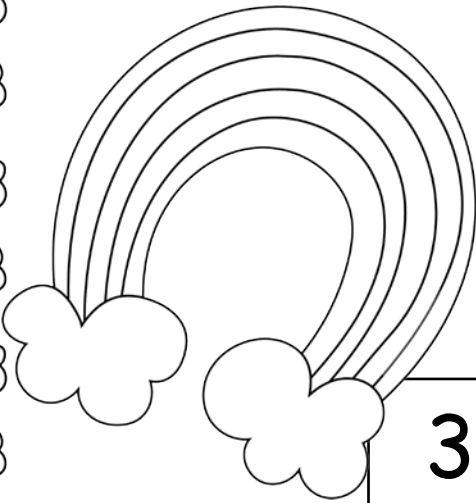


			2	2			
			3	3			
		4	4	4	4		
	5	5	5	5	5	5	
6	6	6	6	6	6	6	6
7	7	7	7	7	7	7	7
8	8	8	8	8	8	8	8
	9	9	9	9	9	9	
		10	10	10	10		
			11	11			
			12	12			



# Rainbow Multiplication Cross Out

Directions: Roll two dice. Find the product of the numbers. Cross out a box with the product. When there are no numbers left with the product you roll, you lose your turn. The player who crosses out the last number is the winner.



			1	2			
			2	3			
		3	3	4	4		
	4	4	5	5	6	6	
6	6	8	8	8	8	9	9
10	10	10	12	12	12	12	12
15	15	15	16	16	18	18	18
	18	20	20	20	24	24	
		24	25	25	30		
			30	30			
			30	36			

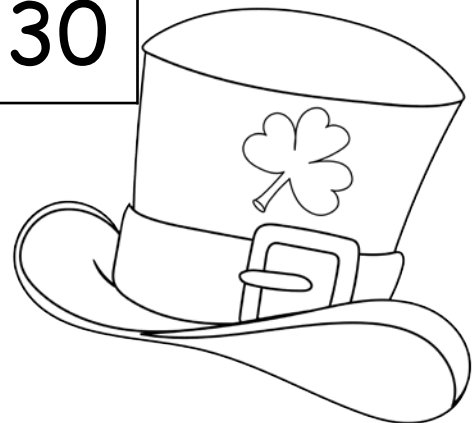
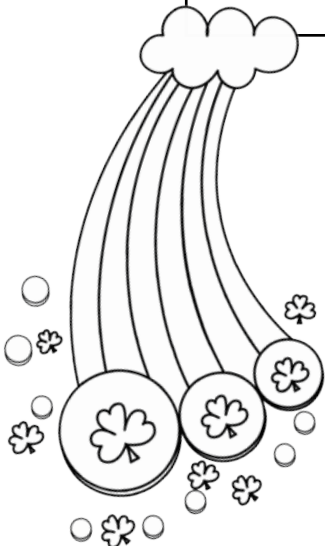
# Leprechaun Multiplication

## Cross Out

Directions: Roll two dice. Find the product of the numbers. Cross out a box with the product. When there are no numbers left with the product you roll, you lose your turn. The player who crosses out the last number is the winner.



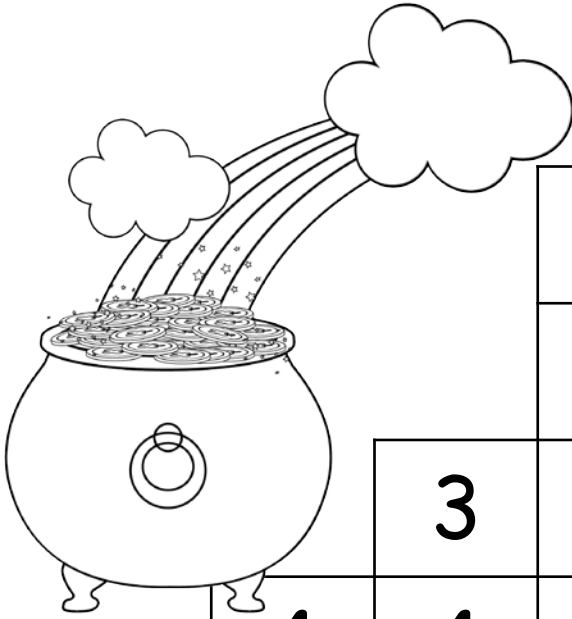
			1	2			
			2	3			
		3	3	4	4		
	4	4	5	5	6	6	
6	6	8	8	8	8	9	9
10	10	10	12	12	12	12	12
15	15	15	16	16	18	18	18
	18	20	20	20	24	24	
		24	25	25	30		
			30	30			
			30	36			



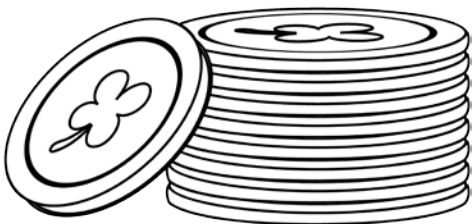


# Pot of Gold Multiplication Cross Out

Directions: Roll two dice. Find the product of the numbers. Cross out a box with the product. When there are no numbers left with the product you roll, you lose your turn. The player who crosses out the last number is the winner.



			1	2			
			2	3			
		3	3	4	4		
	4	4	5	5	6	6	
6	6	8	8	8	8	9	9
10	10	10	12	12	12	12	12
15	15	15	16	16	18	18	18
	18	20	20	20	24	24	
		24	25	25	30		
			30	30			
			30	36			





# Lucky Charms Multiplication Cross Out

Directions: Roll two dice. Find the product of the numbers. Cross out a box with the product. When there are no numbers left with the product you roll, you lose your turn. The player who crosses out the last number is the winner.

			1	2				
			2	3				
		3	3	4	4			
	4	4	5	5	6	6		
6	6	8	8	8	8	9	9	
10	10	10	12	12	12	12	12	
15	15	15	16	16	18	18	18	
	18	20	20	20	24	24		
		24	25	25	30			
			30	30				
			30	36				

# St. Patrick's Day Multiplication Cross Out

Directions: Roll two dice. Find the product of the numbers. Cross out a box with the product. When there are no numbers left with the product you roll, you lose your turn. The player who crosses out the last number is the winner.



			1	2			
			2	3			
		3	3	4	4		
	4	4	5	5	6	6	
6	6	8	8	8	8	9	9
10	10	10	12	12	12	12	12
15	15	15	16	16	18	18	18
	18	20	20	20	24	24	
		24	25	25	30		
			30	30			
			30	36			

