

Valentine's Day

Addition BUMP!

11

6



2

3



10

7

4

5



10

7

12

5

9

10

6

8

12



11

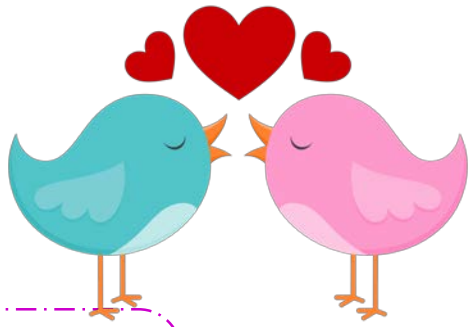
4

6

8

Directions: Roll 2 number cubes and add the numbers. Cover that space with a marker. You can bump your partner's space. If you cover a space with 2 stacked markers, that space can't be bumped. The first player to use all 10 of their markers first wins!

Valentine's Day Addition BUMP!



18

12



16

5

6

3

13



10

3

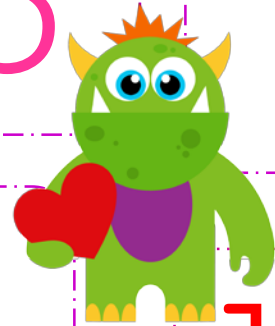
7

14

7

8

8

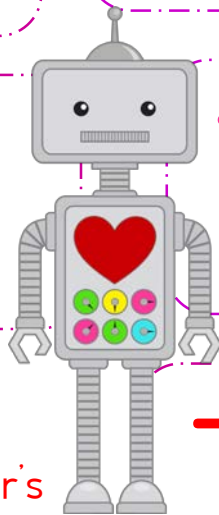


18

9

11

4



15

17

Directions: Roll 3 number cubes and add the numbers. Cover that space with a marker. You can bump your partner's space. If you cover a space with 2 stacked markers, that space can't be bumped. The first player to use all 10 of their markers first wins!

13

12

Addition

BUMP!

Valentine's Day

13

12

15

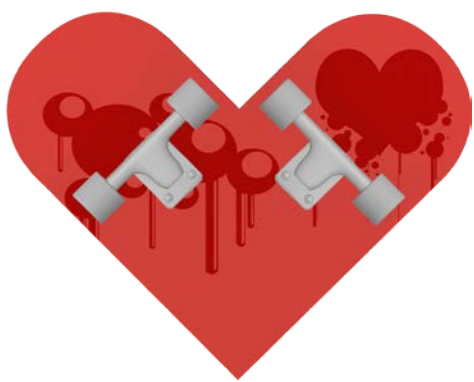
17



7

+

3



14

16

7

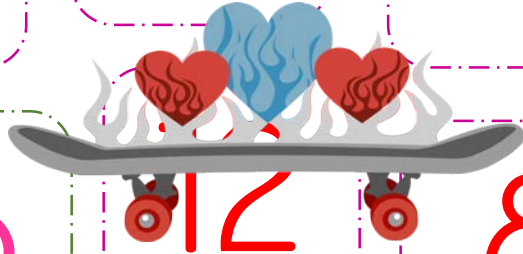
5

11

10

6

8



18

13

18

12

8

Directions: Roll 3 number cubes and add the numbers. Cover that space with a marker. You can bump your partner's space. If you cover a space with 2 stacked markers, that space can't be bumped. The first player to use all 10 of their markers first wins!

6

9

Valentine's Day Addition BUMP!

18	2	13	14	8	18
14	11	3	7	7	13
10	4	10	3	12	
15	16	11	12	6	8
9	4	15	4	5	
10	20	9	17	7	
			19	11	

Use 2
10-sided
Dice.

