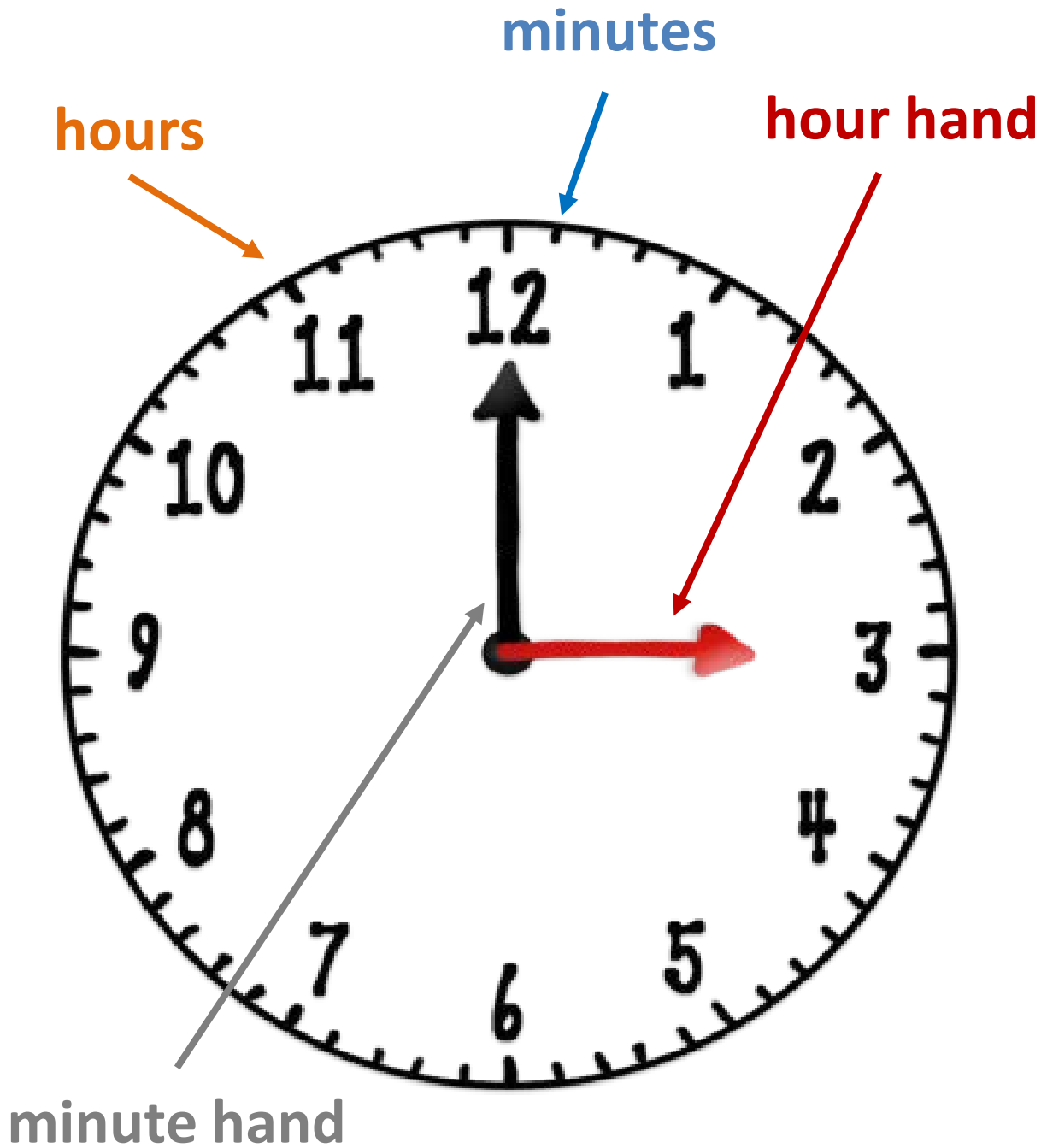
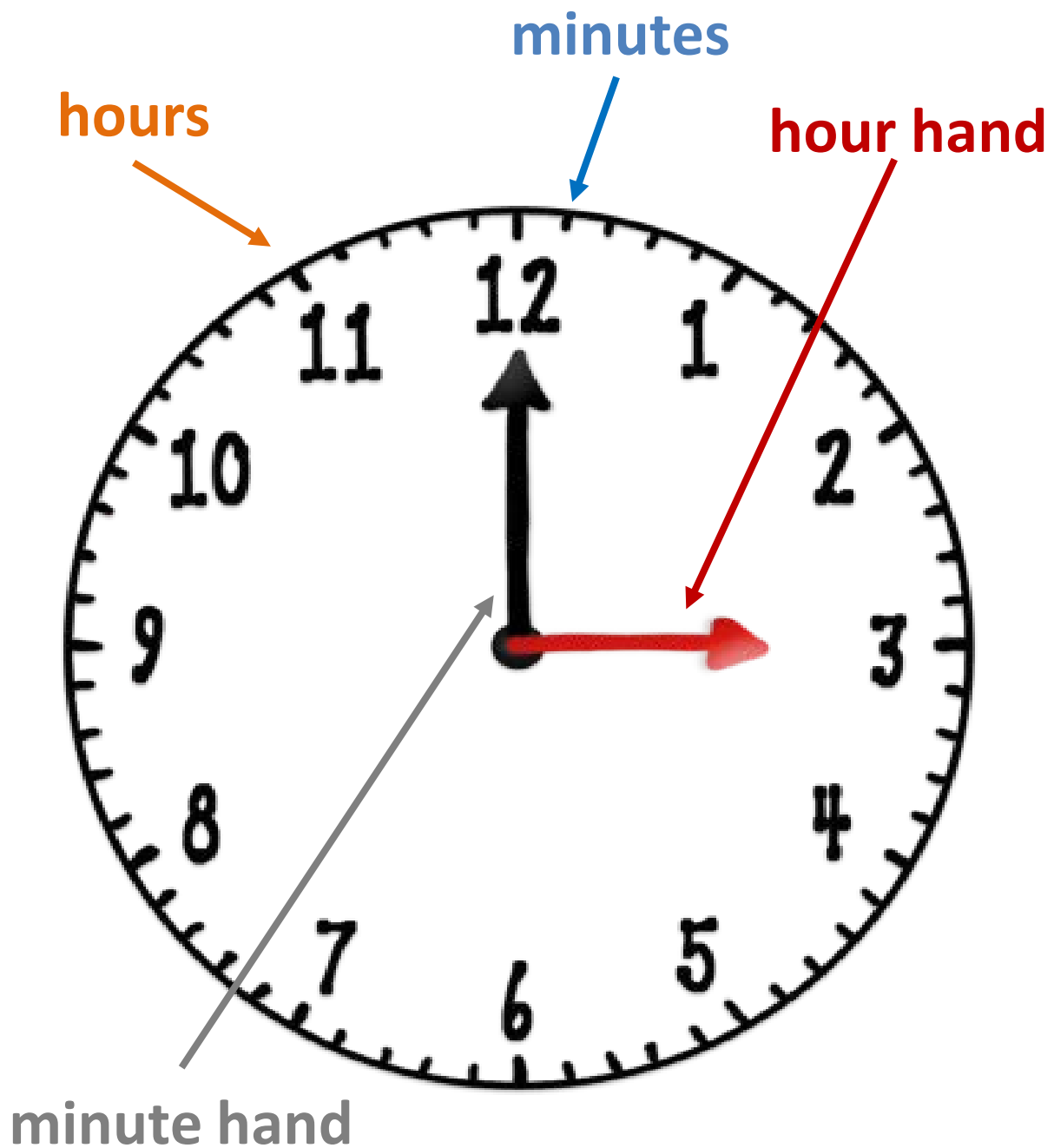


Parts of a Clock



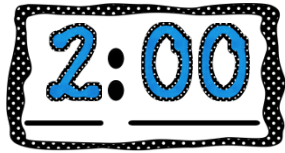
Parts of a Clock



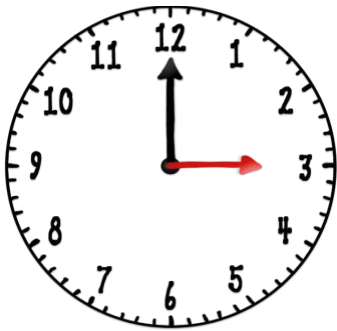
A clock shows 12 hours.
A clock shows 60 minutes.

Telling Time

digital clock



analog clock



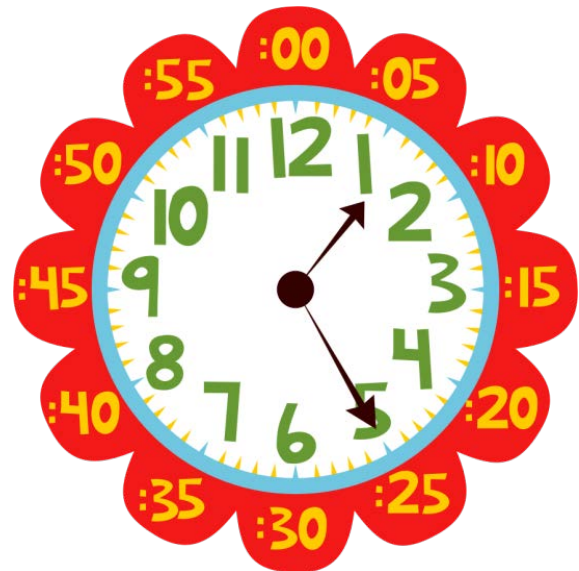
The short hand tells the hour.

The long hand tells the minutes.

60 minutes = 1 hour

30 minutes = $\frac{1}{2}$ hour

15 minutes = $\frac{1}{4}$ hour



a.m. = morning

p.m. = afternoon/evening



quarter
after 12



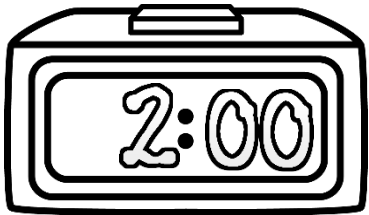
half
past
12



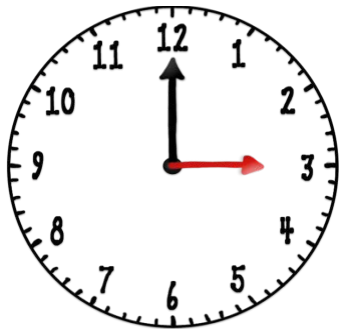
quarter
'til
12

Telling Time

digital clock



analog clock



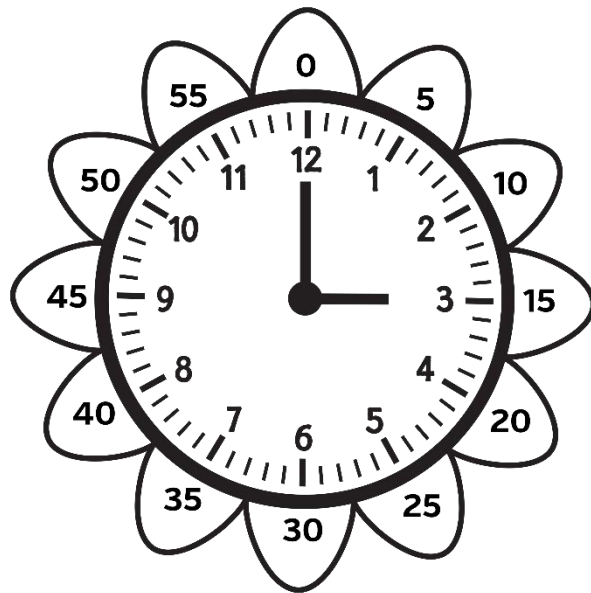
The short hand tells the hour.

The long hand tells the minutes.

60 minutes = 1 hour

30 minutes = $\frac{1}{2}$ hour

15 minutes = $\frac{1}{4}$ hour



a.m. = morning

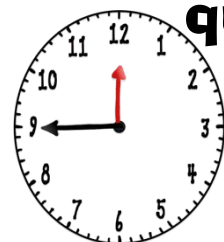
p.m. = afternoon/evening



**quarter
after 12**



**half
past
12**



**quarter
'til
12**

Telling Time

digital clock



analog clock

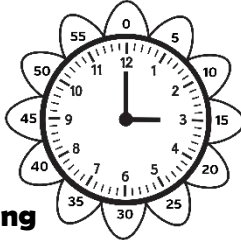


The short hand tells the hour.
The long hand tells the minutes.

60 minutes = 1 hour

30 minutes = ½ hour

15 minutes = ¼ hour



a.m. = morning

p.m. = afternoon/evening



**quarter
after 12**



**half
past 12**



**quarter
'til 12**

© www.thecurriculumcorner.com

Telling Time

digital clock



analog clock

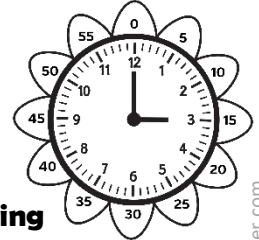


The short hand tells the hour.
The long hand tells the minutes.

60 minutes = 1 hour

30 minutes = ½ hour

15 minutes = ¼ hour



a.m. = morning

p.m. = afternoon/evening



**quarter
after 12**



**half
past 12**

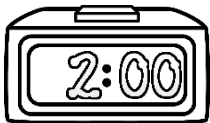


**quarter
'til 12**

© www.thecurriculumcorner.com

Telling Time

digital clock



analog clock

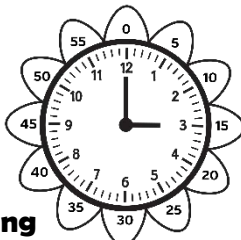


The short hand tells the hour.
The long hand tells the minutes.

60 minutes = 1 hour

30 minutes = ½ hour

15 minutes = ¼ hour



a.m. = morning

p.m. = afternoon/evening



**quarter
after 12**



**half
past 12**



**quarter
'til 12**

© www.thecurriculumcorner.com

Telling Time

digital clock



analog clock

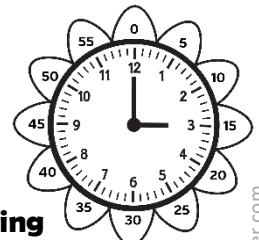


The short hand tells the hour.
The long hand tells the minutes.

60 minutes = 1 hour

30 minutes = ½ hour

15 minutes = ¼ hour



a.m. = morning

p.m. = afternoon/evening



**quarter
after 12**



**half
past 12**



**quarter
'til 12**

© www.thecurriculumcorner.com